



New Tech Agro

Moving Together

AGRI SOLUTION

- ☑ Moisture Testing Equipment
- ☑ Rice Lab Equipment
- ☑ Seed/Grain Lab Equipment



DIGITAL MOISTURE METER (AGRO)-NTA01



Features:

Moisture Meter that is specially designed for precise measurement of moisture in the grains. Equipped with a single chip computer concept, our moisture meter has cemented our place among the well reckoned Grains Moisture Meter manufacturers and supplier
Widely Used For Following types of Grains:- Food Grains, Pulses, Oil Seeds, Vegetable Seed, Rice, Paddy, Wheat Etc.

SPECIFICATION (NTA01):

Type	: Digital Moisture Meter Western make
Usage/Application	: Used for check moisture content in grain
Temp. Range	: 5 -50 Degree Celsius
Accuracy	: +/- 0.2
Warranty	: 1 Year
Battery	: 9 v
Weight	: 9.5kg
Power Supply	: 220 v and battery operated
Brand	: Western
Material	: metal
Measuring Range	: 3.5 to 40%

Features:

Moisture Meter that is specially designed for precise measurement of moisture in the grains. Equipped with a single chip computer concept, our moisture meter has cemented our place among the well reckoned Grains Moisture Meter manufacturers and supplier
Widely Used For Following types of Grains:- Food Grains, Pulses, Oil Seeds, Vegetable Seed, Rice, Paddy, Wheat Etc.

SPECIFICATION (NTA02):

Type	: Digital Moisture Meter Western make
Usage/Application	: Used for check moisture content in grain
Temperature Range	: 5 -50 Degree Celsius
Accuracy	: +/- 0.2
Warranty	: 1 Year
Battery	: 9 v Dry Cell
Weight	: 22.5kg
Power Supply	: 220 v
Material	: Metal
Measuring Range	: 3.5 to 40%

MOISTURE METER (UNIVERSAL)-NTA02



New Tech Agro Industries

UNIVERSAL MOISTURE METER -NTA06



Features:

Moisture Meter that is specially designed for precise measurement of moisture in the grains. Equipped with a single chip computer concept, our moisture meter has cemented our place among the well reckoned Grains Moisture Meter manufacturers and supplier Widely Used For Following types of Grains:- Food Grains, Pulses, Oil Seeds, Vegetable Seed, Rice, Paddy, Wheat Etc.

SPECIFICATION(NTA06):

Type	: Digital Moisture Meter Western make
Usage/Application	: Used for check moisture content in grain
Temp. Range	: 5 -50 Degree Celsius
Accuracy	: +/- 0.2
Warranty	: 1 Year
Battery	: 9 v
Weight	: 23kg
Power Supply	: 220 v and battery operated
Brand	: Western
Material	: metal
Measuring Range	: 3.5 to 40%

DMM-DIGITAL MOISTURE METER-NTA03



SPECIFICATION (NTA03):

Operating Humidity Range	: 0-40%
Measuring Range	: 0% to 40% moisture
Size of Meter	: 125 mm H X 150 mm W X 210 mm D
Power Consumption	: 003 watts approximately
Samples Size	: 250 CC approximately
Power requirement	: Four pencil cells
Weight	: Less than one Kilogram
Accuracy	: +/- 0.5



New Tech Agro Industries

RICE HUSKER NTA-RHL1



Features:

- ☞ Very less broken percentage.
- ☞ Compact design.
- ☞ Feed roller provided for uniform feeding of paddy to rubber roller.

SPECIFICATION (NTA-RHL1):

Capacity	: 40-50kg/hr
Shelling Mechanism	: It comprises of two rubber rollers. De-husking operation is visible through transparent window.
Robber Roller	: 100mm x 35mm (approx.)
Husk Collector	: It is used to collect husk from each sample for further analysis.
Operating Voltage	: 220V, 50Hz, AC.
Motor	: 0.25HP

Features:

- ☞ Good polishing efficiency and less brokens.
- ☞ Professionally made emery roller for better polishing.
- ☞ Rugged design.
- ☞ Timer provided for setting polishing time.
- ☞ User friendly.

SPECIFICATION (NTA-RP1):

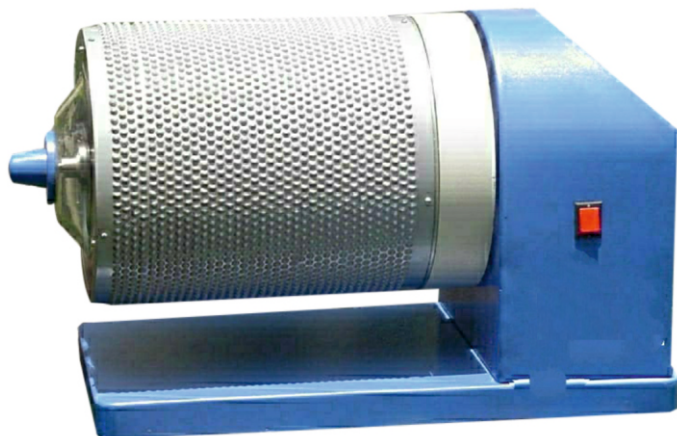
Hopper Capacity	: 100g/batch.
Input	: Brown rice.
Output	: Polished rice.
Sieve	: Grinding wheel is surrounded by an oblong sieve for removal of bran.
Bran Collector	: It is used to collect bran from each sample for further use.
Operating Voltage	: 220V, 50Hz AC.
Result	: Efficient, Fast & Accurate.
Motor Power	: 1/2HP.

RICE POLISHER NTA-RP1



New Tech Agro Industries

RICE BROKEN SEPARATOR NTA-RB1



Features:

- ➔ Robust construction ensures years of trouble free operation.
- ➔ Compact and portable.
- ➔ Unique design identical to large indent cylinder separators.

SPECIFICATION (NTA-RB1):

Voltage	: 220V, 50hz to test the broken rice ratio. It can separate the rice and broken rice quickly, replace the manual separation.
Separating cylinder	: 130x200 mm
Rotational speed	: 28 r/min
Power	: 40w
Separation time	: 2mts +/- 5 seconds.
Quantity	: 50 grams

Features:

- ➔ Used to distinguish discoloured, damaged & chalky grains/seeds.
- ➔ Light below the rectangular 11" x 6" opal glass makes a handy diaphanoscope. Use of this spot with chaffy glass eliminates all guess works on tests.
- ➔ Fitted with a magnifying glass covering the entire surface of opal glass.

SPECIFICATION (NTA-IPL1):

Objective	: Designed for testing physical purity of Seed samples with maximum comfort and efficiency.
Classification	: Used to distinguish discoloured, damaged & chalky grains/seeds.
Diaphanoscope	: Light below the rectangular 11" x 6" opal glass makes a handy diaphanoscope. Use of this spot with chaffy glass eliminates all guess works on tests. One convenient drawer is provided for larger seed lots. It is fitted with a magnifying glass covering the entire surface of opal glass.
Drawer Capacity	: 930 cc (approx.).
Supply	: 220V AC.

ILLUMINATED PURITY WORK BOARD NTA-IPL1



New Tech Agro Industries

SEED HAND TEST SIEVES NTA-HS4



SPECIFICATION (NTA-HS4):

A required set of four sieves to experiment with various separations and select the correct sieves for each cleaning problem. Frame of sieves are made of brass, sieves are made of zinc coated MS.

Available in two sizes : Dia. 12" x 3" & Dia. 8" x 2" (Approx.)

Brass Top Lid & Bottom Pan for Dia. 12" x 3" Sieves

Brass Top Lid & Bottom Pan for Dia. 8" x 2" Sieves



Features:

- Specially designed analysis kit consisting of small analysis equipment packed in specially design canvas bag, to carry out physical analysis of grains and seeds in field and lab.

SPECIFICATION (NTA-AK101):

Mechanical weighing balance	: upto 100g
Weight Box	: upto 100g
Enameled Plate	: 9" dia
Parkhi	: 9" Length
Sieve	: 3.30 Mesh
Magnifying Glass	: 4"
Scoop	: Stainless steel
Measuring Cylinder	: 20cc
Petri Dish	: Good quality.
Forcep	: Good quality.
Bag	: These items are packed in a specially designed canvas bag.

GRAIN ANALYSIS KIT NTA-AK101



New Tech Agro Industries

SEED DIVIDER (RIFFLE/SOIL TYPE) NTA-RD1



Features:

- Stainless steel base provided.
- Portable
- No electricity
- Ease of operation
- Body made of stainless steel(rust free)

SPECIFICATION (NTA-RD1):

Hopper, dividing chutes & scoop: Made of stainless steel
 Collecting pans : 2 no's
 Cleaning brush : 1

SPECIFICATION (NTA-P1):

Used for collecting small quantity of sample from a lot of cereals. Made of brass, available in different sizes.

Size : 6"
 : 9"
 : 12"

PARKHI NTA-P1



DAIL CALIPER NTA-DC1



Features:

- Molded body of fine quality nylon-6 plastic.
- Compact portable handy & accurate.
- Analog display on dial.
- Measuring range 0-10mm

SPECIFICATION (NTA-DC1):

Range : 0 -10 mm
 Accuracy : 0.01 mm
 Dimensions (approx) : 145 mm x 75 mm (L x B)
 (approx.)
 Weight : 345 gm (Approx.)

New Tech Agro Industries

SEED GRADER LAB MODEL NTA-GL10



Features:

- Made of teak wood & teak ply.
- Adjustable feeding control.
- Blowing air speed is regulated through a control valve.
- Handle for manual operation of the machine.
- Stainless steel sieves are available optionally.
- Motor of reputed make

SPECIFICATION (NTA-GL40):

Body construction	: Made of teak wood & teak ply.
Capacity	: 25- 40 Kg/hour (Based on Paddy).
Feed hopper	: Designed for many crop seeds, with adjustable feeding control.
Fan	: Blowing air speed is regulated through a control valve.
Collection trays	: One each for under size, over size & graded/clean seeds.
Operating Voltage	: 220V, 50Hz AC.
Screen Area	: 30 x 25.4 cm (Approx).
No. of screen	: Two
Power	: 0.5HP

Features:

- Dividing cup made in single piece from die for more accuracy.
- Material flowing components made without joints.
- All circular parts made on spinning.
- Smooth finish.
- Body and inner parts are made up of brass (rust proof).

SPECIFICATION (NTA-BT1):

Body	: Made of brass.
Capacity	: Sample up to 1000g.
No. of pockets	: 38 pockets (cup made in single piece on die, increases accuracy.
Accuracy	: $\pm 1\%$ on a 1000g sample.
Legs and supports	: Powder coated steel.
Material flowing components	: No joints, smooth finishing.
Standards	: Meets BIS standards.
Collecting pans	: 2 No.

SEED DIVIDER (BOERNER TYPE) NTA-BT1



New Tech Agro Industries

HOT AIR OVEN NTA-HO60



Standard double wall fabrication, Inner chamber made of richly anodized aluminum or highly polished stainless steel sheet. Exterior fabricated out of thick milled steel duly finished in white stoving enamel/Powder coated paint with mat finished Colour combinations. Kanthal wire heating elements provided on three sides to attain quick and uniform heating in range of 5° C to 25 0° Ci 2° C, controlled by capillary type thermostat.

SPECIFICATION (NTA-HO60):

Inner Chamber Size	: 90x60x60cm
Temperature Range	: PID Control, Ambient to 150°C ± 2°C. PT-100 temperature sensor.
Electronics	: Micro controller based digital display of temperature.
Alarm	: Audiovisual alarm for temperature deviation.
Display	: 2x16 character alphanumeric LCD displays with backlit.
Operating Voltage	: 230V, 50Hz AC. ± 10%

Features:

- ➔ Programmable stop to compensate for any In-flight Error due to the motion of the seeds.
- ➔ Knob provided to remove pan.

SPECIFICATION (NTA-SCM):

Counting range	: Small & middle sample 0.7-4mm, big sample 3-10mm, 3-12mm
Accuracy	: Big/middle sample 2/1000
Small sample	: 4/1000
Counting speed	: > 1000/min
Counting Capacity	: 1-99999
power	: 220V, 50Hz or 110V
Counting working time	: >5 hours
Weight	: 6.5kg.

DIGITAL SEED COUNTER NTA-SCM



New Tech Agro Industries

SEED GERMINATOR SINGLE CHAMBER NTA-SG01



Features:

- Used for germination of seed samples.
- Fully programmable for light, temperature and humidity.
- Digital Display of temperature and humidity.

SPECIFICATION (NTA-SG01):

- Capacity 6cu. ft/170ltrs.
- Temperature Range 5°C to 45°C.
- Accuracy Temp. $\pm 1\%$, Humidity $\pm 5\%$.
- Humidity - ambient to 90% RH.
- Double Wall (Inner Chamber Stainless Steel Outside MS coated).
- Micro Controller based temperature and humidity controller.
- Size 50 x 41 x 85cm.

Features:

- Used for germination of seed samples.
- Fully programmable for light, temperature and humidity.
- Digital Display of temperature and humidity.

SPECIFICATION (NTA-SG02):

- Capacity 6cu. ft/170ltrs.
- Temperature Range 5°C to 45°C.
- Accuracy Temp. $\pm 1\%$, Humidity $\pm 5\%$.
- Humidity - ambient to 90% RH.
- Double Wall (Inner Chamber Stainless Steel Outside MS coated).
- Micro Controller based temperature and humidity controller.

SEED GERMINATOR DOUBLE CHAMBER NTA-SG02



New Tech Agro Industries

HOT AIR SEED DRYER NTA-ASD1



Features:

- Provision to programme different temperature for different time interval.
- Facility to data record and storage capacity upto 1000 readings
- Membrane keypad.
- Program lock.
- Mounted on wheels for easy portability.
- The tray positions are adjustable inside the chamber.

SPECIFICATION (NTA-ASD1):

Capacity	: 34 cu ft.
Temperature	: Ambient to 50° C
No of trays	: Two
Operating Voltage	: 220 V AC ± 10%, 50 Hz

SPECIFICATION (NTA-SM001):

Power	: 220 V, 1 phase.
Construction	: M.S. powder coated.
Panel	: Panel box for sealing timer, sealing indicator and power indicator system.

SEALING MACHINE NTA-SM001



BAG CLOSER MACHINE NTA-BCM1



SPECIFICATION (NTA-BCM1):

Type of Stitch	: Single thread chain stitch
Sewing Speed	: Maximum 1600-1800 stitches per minute
Stitch Length	: 3.5 stitch per inch (Fixed)
Cutter Type	: Mechanical
Power Requirement	: 0.1 HP, 8000 rpm 220V, 1.3 amps

New Tech Agro Industries

MAIZE SHELLER HEAVY DUTY 3HP NTA-MS3



SPECIFICATION(NTA-MS3):

General Use	: Farmer
Capacity	: 1300 Kg/hr
Weight (kg)	: 95 Kilograms (kg)
Type	: Agricultural Tools, Mini Harvester, Farm Cultivator, Garden Cultivator, Grain Processing Equipment
Drive Type	: Belt Drive
Power	: 3HP

MAIZE SHELLER 2 HP NTA-MS2



SPECIFICATION(NTA-MS2):

General Use	: Farm
Capacity	: 700kg Kg/hr
Weight (kg)	: 60 Kilograms (kg)
Drive Type	: Belt Drive
Power	: 2hp Horsepower (HP)
Power Source	: Other
Transmission Type	: Belt

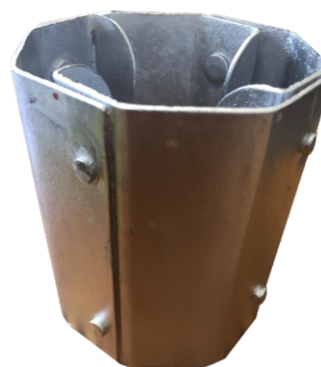
MAIZE SHELLER 1 HP NTA-MS1



SPECIFICATION (NTA-MS1):

Capacity	: 200KG Kg/hr
Weight (kg)	: 32KG Kilograms (kg)
Type	: Agricultural Tools, Grain Processing Equipment
Drive Type	: Belt Drive
Power	: 220V Volt (v)
Power Source	: Other
Transmission Type	: Belt

MAIZE SHELLER WITHOUT POWER



SPECIFICATION :

General Use	: Farmer
Weight (kg)	: 200 Gram (g)
Type	: Agricultural Tools, Farm Cultivator, Disc Harrow, Garden Cultivator, Grain Processing Equipment, Combine Harvester

New Tech Agro Industries



New Tech Agro

Moving Together



NEW TECH AGRO INDUSTRIES

Office Address:- #65, Singhawala, Near Govt. School, Ambala City, Haryana

Manufacturing Address:- #200, HSIIDC, Industrial Area, Phase-2, Saha, Ambala-133104 (Haryana)

Phone : +91 91385 28627, 8168142206, Email: newtechagroind@gmail.com Website: www.newtechagroind.com